

Schriftart (Schriftgröße M, Hintergrund an)

Das Wandern

Worte: Wilhelm Müller 1818 (1794-1827)

Weise: Karl Zöllner 1844 (1800-1860)

$\text{♩} = 120$

1. Das Wan - dern ist des Mül - lers Lust, das Wan - dern ist des
 Mül - lers Lust, das Wan - - dern. Das__ muss ein schlech-ter__
 Mül - ler sein, dem__ nie - mals fiel__ das__ Wan - dern ein, dem
 nie - mals fiel das Wan - dern ein, das Wan - - dern.

Tom Dooley

(trad. USA)

Hang down your head Tom Doo - - ley,
 hang down your head and cry.
 Hang down your head Tom Doo - - ley,
 poor boy your're bound to die.

Der Mond ist aufgegangen

Text: Matthias Claudius (1740-1815)

Satz: Rolf Lukowsky (*1926)

Der Mond ist auf - ge - gang - - en. Die gold - nen Stern - lein
 prang - - en am Him - mel hell und klar. Der
 Wald steht schwarz und schwei - - get und aus den Wie - sen
 stei - - get der wei - ße Ne - bel wun - der - bar.

O Tannenbaum

O Christmas Tree

G D7 G (Em) Am D7
 G G C D7
 G D7 G D7 G Am D7 G

O Tannenbaum

O Christmas Tree

G D7 G (Em) Am D7
 G G C D7
 G D7 G D7 G Am D7 G

TEST: Vocal SATB score.

soprano
C D E F G A B c c d e f g a b c'

alto
C D E F G A B c c d e f g a b c'

tenor
C, D, E, F, G, A, B, C C D E F G A B c

bass
C,, D,, E,, F,, G,, A,, B,, C, C, D, E, F, G, A, B, C

Hey Jude

Lennon/McCartney

4/4

3

1 2

3 3

Schriftart (Schriftgröße S, Hintergrund an)

Hey Jude

Lennon/McCartney

The image shows the piano accompaniment for the song 'Hey Jude' in G major, 4/4 time. It consists of six staves of music. The first staff begins with a repeat sign and a first ending bracket. The second staff contains a triplet of eighth notes. The third staff has two first ending brackets labeled '1' and '2'. The fourth and fifth staves feature several triplet markings. The sixth staff concludes the piece with a final chord.

TEST: Vocal SATB score.

The image displays a vocal SATB score for the song 'Hey Jude'. It features four staves: soprano, alto, tenor, and bass. Each staff contains a melodic line with corresponding lyrics underneath. The lyrics are: 'C D E F G A B c c d e f g a b c'. The soprano and alto parts use a treble clef, the tenor part uses an alto clef, and the bass part uses a bass clef. The lyrics are written in a simple, sans-serif font.

O Tannenbaum
O Christmas Tree

G D7 G (Em) Am D7 G G C D7

G D7 G D7 G Am D7 G

Der Mond ist aufgegangen

Text: Matthias Claudius (1740-1815)
Satz: Rolf Lukowsky (*1926)

Der Mond ist auf - ge - gang - - en. Die gold - nen Stern - lein
prang - - - en am Him - mel hell und klar. Der
Wald steht schwarz und schwei - - get und aus den Wie - sen
stei - - - get der wei - ße Ne - bel wun - der - bar.

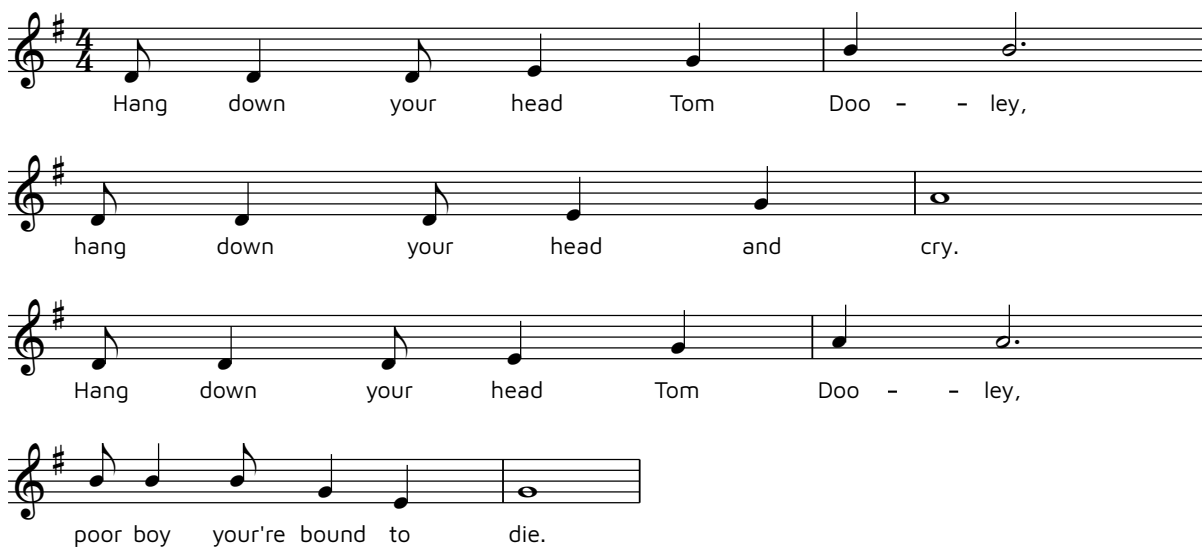
O Tannenbaum
O Christmas Tree

G D7 G (Em) Am D7 G G C D7

G D7 G D7 G Am D7 G

Tom Dooley

(trad. USA)



Hang down your head Tom Doo - - ley,
hang down your head and cry.
Hang down your head Tom Doo - - ley,
poor boy your're bound to die.

Das Wandern

Worte: Wilhelm Müller 1818 (1794-1827)
Weise: Karl Zöllner 1844 (1800-1860)

$\text{♩} = 120$



1. Das Wan - dern ist des Müll - lers Lust, das Wan - dern ist des
Müll - lers Lust, das Wan - - dern. Das muss ein schlech - ter
Müll - ler sein, dem nie - mals fiel das Wan - dern ein, dem
nie - mals fiel das Wan - dern ein, das Wan - - - dern.

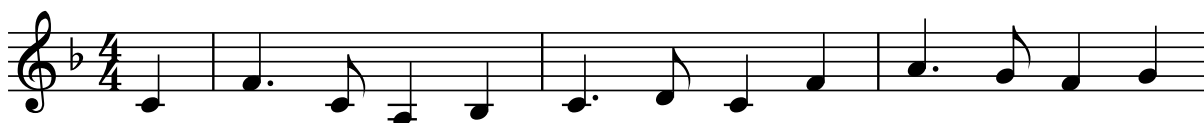
Schriftart (Schriftgröße L, Hintergrund an)

Das Wandern

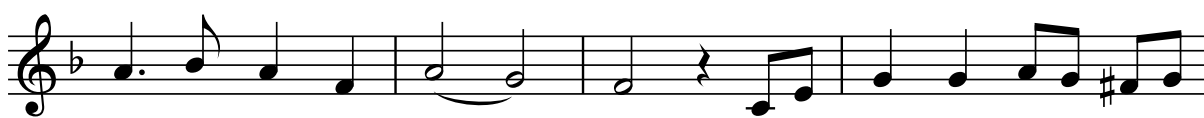
Worte: Wilhelm Müller 1818 (1794-1827)

Weise: Karl Zöllner 1844 (1800-1860)

♩ = 120



1. Das Wan-dernist des Mül - lersLust, das Wan-dernist des



Mül-lersLust, das Wan - - dern. Das_ mussein schlechter_



Mül - ler sein, dem_ nie- mals fiel_ das_ Wan-dern ein, dem



nie- mals fiel das Wan- dernein, das Wan - - dern.

Der Mond ist aufgegangen

Text: Matthias Claudius (1740-1815)

Satz: Rolf Lukowsky (*1926)

Der Mond ist auf-ge-gang - - en. Die gold-nen Stern-lein
 prang - - en am Him-mel hell und klar. Der
 Wald steht schwarz und schwei - - get und aus den Wie-sen
 stei - - get der wei - ße Ne-bel wun-der-bar.

O Tannenbaum

O Christmas Tree

G D7 G (Em) Am D7
 G G C D7
 G D7 G D7

Tom Dooley

(trad. USA)

Hang down your head Tom Doo - ley,

hang down your head and cry.

Hang down your head Tom Doo - ley,

poor boy you're bound to die.

TEST: Vocal SATB score.

soprano
C D E F G A B c c d e f g a b c'

alto
C D E F G A B c c d e f g a b c'

tenor
C, D, E, F, G, A, B, C C D E F G A B c

bass
C,, D,, E,, F,, G,, A,, B,, C, C, D, E, F, G, A, B, C

O Tannenbaum O Christmas Tree

Musical notation for "O Tannenbaum" in G major, 3/4 time. The first line contains six measures with chords G, D7, G, (Em), Am, and D7. The second line contains four measures with chords G, G, C, and D7. The notation includes a repeat sign and a fermata.

Hey Jude

Lennon/McCartney

Musical notation for "Hey Jude" in G major, 4/4 time. The notation consists of seven staves. The first staff begins with a repeat sign. The second and third staves show a melodic line with a triplet of eighth notes. The fourth staff includes first and second endings. The fifth and sixth staves feature triplet markings. The seventh staff is a bass line.

Schriftart (Schriftgröße XL, Hintergrund an)

O Tannenbaum

O Christmas Tree

G D7 G (Em) Am D7

G G C D7

G D7 G D7

G Am D7 G

O Tannenbaum O Christmas Tree

G D7 G (Em) Am D7

G G C D7

G D7 G D7

G Am D7 G

O Tannenbaum O Christmas Tree

G D7 G (Em) Am D7

G G C D7

G D7 G D7

G Am D7 G

O Tannenbaum

O Christmas Tree

Musical notation for the first system of 'O Tannenbaum'. It consists of three staves in treble clef, key of G major (one sharp), and 3/4 time signature. The first staff contains the melody with notes G4, A4, B4, A4, G4, F#4, E4, D4. Chords above are G, D7, G, (Em), Am, D7. The second staff contains a repeat sign followed by notes G4, A4, B4, A4, G4, F#4, E4, D4. Chords above are G, G, C, D7. The third staff contains notes G4, A4, B4, A4, G4, F#4, E4, D4. Chords above are G, D7, G, D7.

O Tannenbaum

O Christmas Tree

Musical notation for the second system of 'O Tannenbaum'. It consists of three staves in treble clef, key of G major (one sharp), and 3/4 time signature. The first staff contains the melody with notes G4, A4, B4, A4, G4, F#4, E4, D4. Chords above are G, D7, G, (Em), Am, D7. The second staff contains a repeat sign followed by notes G4, A4, B4, A4, G4, F#4, E4, D4. Chords above are G, G, C, D7. The third staff contains notes G4, A4, B4, A4, G4, F#4, E4, D4. Chords above are G, D7, G, D7.

O Tannenbaum O Christmas Tree

G D7 G (Em) Am D7

G G C D7

G D7 G D7

C A D7 C

O Tannenbaum O Christmas Tree

G D7 G (Em) Am D7

G G C D7

G D7 G D7

C Am D7 C

Verschiedene Kombinationen (Hintergrund aus)

Das Wandern

Worte: Wilhelm Müller 1818 (1794-1827)
Weise: Karl Zöllner 1844 (1800-1860)

♩ = 120

1. Das Wan - dern ist des Mül - lers Lust, das Wan - dern ist des
 Mül - lers Lust, das Wan - - dern. Das ___ muss ein schlech - ter ___
 Mül - ler sein, dem ___ nie - mals fiel ___ das ___ Wan - dern ein, dem
 nie - mals fiel das Wan - dern ein, das Wan - - - dern.

O Tannenbaum O Christmas Tree

G D7 G (Em) Am D7
 G G C D7
 G D7 G D7
 G Am D7 G

TEST: Vocal SATB score.

A four-part vocal SATB score for a scale exercise. The parts are soprano, alto, tenor, and bass. Each part has two staves of music. The notes are written in a simple, stepwise fashion. Below each staff, the corresponding letter names are written in a matching case (uppercase for soprano and alto, lowercase for tenor and bass). The first staff of each part contains the notes C, D, E, F, G, A, B, c. The second staff contains the notes c, d, e, f, g, a, b, c'. The tenor part uses a bass clef and the notes C, D, E, F, G, A, B, C. The bass part uses a bass clef and the notes C,, D,, E,, F,, G,, A,, B,, C,.

Hey Jude

Lennon/McCartney

A musical score for the song 'Hey Jude' in G major and 4/4 time. The score consists of five staves of music. The first staff begins with a treble clef, a key signature of one sharp (F#), and a 4/4 time signature. The music is written in a simple, stepwise fashion. The second staff has a treble clef and a key signature of one sharp. The third staff has a treble clef and a key signature of one sharp. The fourth staff has a treble clef and a key signature of one sharp, with first and second endings marked with '1' and '2'. The fifth staff has a treble clef and a key signature of one sharp, with triplets marked with '3'.