

## Schriftart (Schriftgröße M, Hintergrund an)

### Das Wandern

Worte: Wilhelm Müller 1818 (1794-1827)

Weise: Karl Zöllner 1844 (1800-1860)

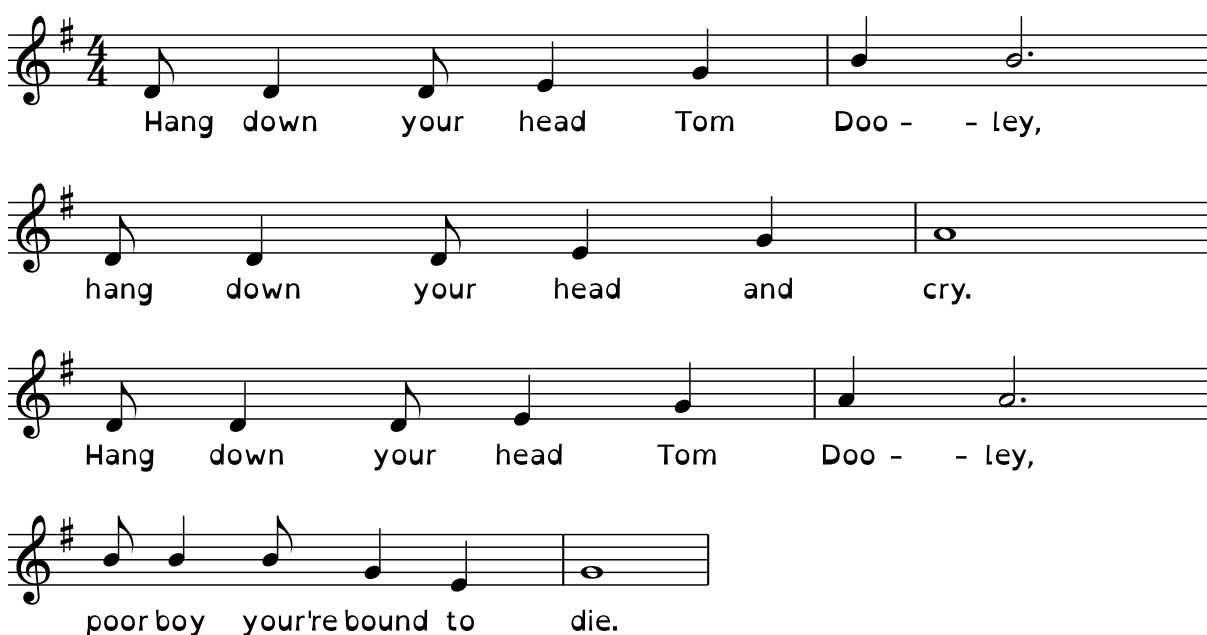
$\text{♩} = 120$



1. Das Wan - dern ist des Mül - lers Lust, das Wan - dern ist des  
Mül - lers Lust, das Wan - - dern. Das\_\_ muss ein schlech-ter\_\_  
Mül - ler sein, dem\_\_ nie - mals fiel\_\_ das\_\_ Wan - dern ein, dem  
nie - mals fiel das Wan - dern ein, das Wan - - dern.

### Tom Dooley

(trad. USA)



Hang down your head Tom Doo - - ley,  
hang down your head and cry.  
Hang down your head Tom Doo - - ley,  
poor boy your're bound to die.

## Der Mond ist aufgegangen

Text: Matthias Claudius (1740-1815)

Satz: Rolf Lukowsky (\*1926)

Der Mond ist auf - ge - gang - - en. Die gold - nen Stern - lein  
 prang - - en am Him - mel hell und klar. Der  
 Wald steht schwarz und schwei - - get und aus den Wie - sen  
 stei - - get der wei - ße Ne - bel wun - der - bar.

## O Tannenbaum

O Christmas Tree

G D7 G (Em) Am D7  
 G G C D7  
 G D7 G D7 G Am D7 G

## O Tannenbaum

O Christmas Tree

G D7 G (Em) Am D7  
 G G C D7  
 G D7 G D7 G Am D7 G

TEST: Vocal SATB score.

A vocal SATB score for a test exercise. It consists of four staves: soprano, alto, tenor, and bass. Each staff contains two measures of music. The notes are: soprano (C, D, E, F, G, A, B, c), alto (C, D, E, F, G, A, B, c), tenor (C, D, E, F, G, A, B, C), and bass (C,, D,, E,, F,, G,, A,, B,, C,). The second measure continues with lowercase letters: soprano (c, d, e, f, g, a, b, c'), alto (c, d, e, f, g, a, b, c'), tenor (C, D, E, F, G, A, B, c), and bass (C, D, E, F, G, A, B, C).

Hey Jude

Lennon/McCartney

A musical score for 'Hey Jude' in 4/4 time, key of D major. It consists of five staves of music. The first staff starts with a treble clef, a key signature of one sharp (F#), and a 4/4 time signature. The melody begins with a quarter rest followed by a quarter note D, then a half note E, and a quarter note F#. The second staff continues the melody with quarter notes G, A, B, C, D, E, F#, G. The third staff continues with quarter notes A, B, C, D, E, F#, G, and a triplet of quarter notes A, B, C. The fourth staff continues with quarter notes D, E, F#, G, A, B, C, and a first ending bracket over quarter notes D, E, F#, G, A, B, C. The fifth staff continues with quarter notes D, E, F#, G, A, B, C, and a second ending bracket over quarter notes D, E, F#, G, A, B, C, followed by a triplet of quarter notes D, E, F# and another triplet of quarter notes G, A, B.

### Schriftart (Schriftgröße S, Hintergrund an)

## Hey Jude

Lennon/McCartney

A piano score for 'Hey Jude' in G major, 4/4 time. The score consists of six staves of music. It begins with a treble clef, a key signature of one sharp (F#), and a 4/4 time signature. The melody is written in a single voice, featuring various rhythmic patterns including eighth and sixteenth notes, and rests. There are several triplet markings (indicated by a '3' below the notes) and first/second ending brackets (indicated by '1' and '2' above the notes). The piece concludes with a double bar line.

### TEST: Vocal SATB score.

A vocal SATB score for 'Hey Jude' in G major, 4/4 time. The score is arranged for soprano, alto, tenor, and bass voices. Each voice part is written on a separate staff with its respective clef (soprano and alto in treble clef, tenor and bass in bass clef). The lyrics are written below the notes. The score is divided into two systems. The first system contains the first eight measures, and the second system contains the next eight measures. The lyrics for the first system are: C D E F G A B c. The lyrics for the second system are: c d e f g a b c'. The notes are written in a simple, clear font, and the lyrics are aligned with the notes.

O Tannenbaum  
O Christmas Tree

G D7 G (Em) Am D7 G G C D7

G D7 G D7 G Am D7 G

Der Mond ist aufgegangen

Text: Matthias Claudius (1740-1815)  
Satz: Rolf Lukowsky (\*1926)

Der Mond ist auf - ge - gang - - en. Die gold - nen Stern - lein  
prang - - - en am Him - mel hell und klar. Der  
Wald steht schwarz und schwei - - get und aus den Wie - sen  
stei - - - get der wei - ße Ne - bel wun - der - bar.

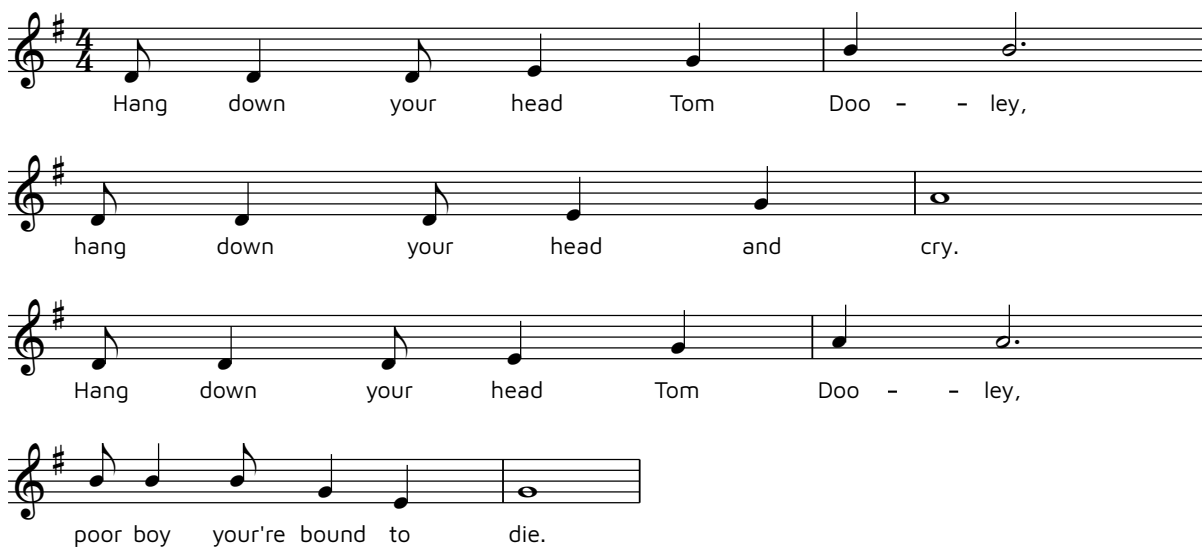
O Tannenbaum  
O Christmas Tree

G D7 G (Em) Am D7 G G C D7

G D7 G D7 G Am D7 G

## Tom Dooley

(trad. USA)



Hang down your head Tom Doo - - ley,  
hang down your head and cry.  
Hang down your head Tom Doo - - ley,  
poor boy your're bound to die.

## Das Wandern

Worte: Wilhelm Müller 1818 (1794-1827)  
Weise: Karl Zöllner 1844 (1800-1860)

♩ = 120



1. Das Wan - dern ist des Müll - lers Lust, das Wan - dern ist des  
Müll - lers Lust, das Wan - - dern. Das\_\_ muss ein schlech - ter\_\_  
Müll - ler sein, dem\_\_ nie - mals fiel\_\_ das\_\_ Wan - dern ein, dem  
nie - mals fiel das Wan - dern ein, das Wan - - - dern.

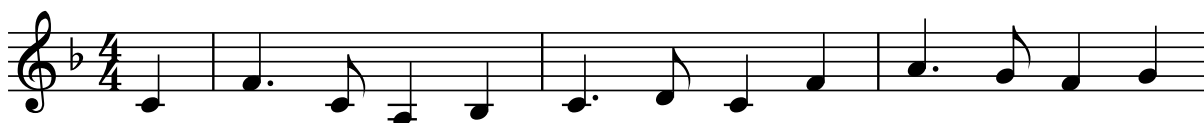
## Schriftart (Schriftgröße L, Hintergrund an)

# Das Wandern

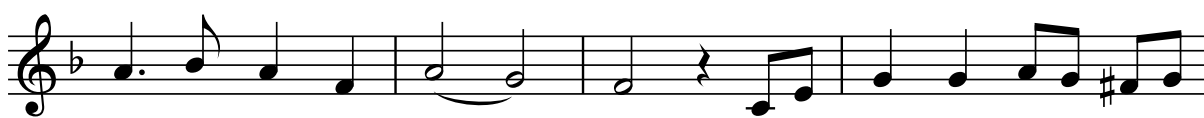
Worte: Wilhelm Müller 1818 (1794-1827)

Weise: Karl Zöllner 1844 (1800-1860)

♩ = 120



1. Das Wan-dern ist des Mül - lers Lust, das Wan-dern ist des



Mül-lers Lust, das Wan - - dern. Das\_ mus sein schlechter\_



Mül - ler sein, dem\_ nie- mals fiel\_ das\_ Wan-dern ein, dem



nie- mals fiel das Wan- dernein, das Wan - - dern.

# Der Mond ist aufgegangen

Text: Matthias Claudius (1740-1815)

Satz: Rolf Lukowsky (\*1926)

Der Mond ist auf-ge-gang - - en. Die gold-nen Stern-lein

prang - - en am Him-mel hell und klar. Der

Wald steht schwarz und schwei - - get und aus den Wie-sen

stei - - get der wei - ße Ne-bel wun-der-bar.

# O Tannenbaum

O Christmas Tree

G D7 G (Em) Am D7

G G C D7

G D7 G D7



## Tom Dooley

(trad. USA)

Hang down your head Tom Doo - ley,

hang down your head and cry.

Hang down your head Tom Doo - ley,

poor boy you're bound to die.

## TEST: Vocal SATB score.

soprano C D E F G A B c c d e f g a b c'

alto C D E F G A B c c d e f g a b c'

tenor C, D, E, F, G, A, B, C C D E F G A B c

bass C,, D,, E,, F,, G,, A,, B,, C, C, D, E, F, G, A, B, C

# O Tannenbaum O Christmas Tree

Musical notation for "O Tannenbaum" in G major, 3/4 time. The first staff contains the melody with chords G, D7, G, (Em), Am, and D7. The second staff contains a continuation of the melody with chords G, G, C, and D7.

# Hey Jude

Lennon/McCartney

Musical notation for "Hey Jude" in G major, 4/4 time. The notation consists of seven staves of music. The first staff shows the beginning of the piece with a repeat sign. The second and third staves continue the melody. The fourth staff includes a triplet of eighth notes. The fifth staff features first and second endings. The sixth and seventh staves continue the melody with triplets. The eighth staff shows the bass line.

Schriftart (Schriftgröße XL, Hintergrund an)

# O Tannenbaum

## O Christmas Tree

G D7 G (Em) Am D7

G G C D7

G D7 G D7

G Am D7 G

# O Tannenbaum

## O Christmas Tree

G D7 G (Em) Am D7

G G C D7

G D7 G D7

G Am D7 G

# O Tannenbaum

## O Christmas Tree

G D7 G (Em) Am D7

G G C D7

G D7 G D7

G Am D7 G

# O Tannenbaum O Christmas Tree

Musical score for 'O Tannenbaum' in G major, 3/4 time. The score consists of three staves of music. The first staff contains the first five measures with chords G, D7, G, (Em), Am, and D7. The second staff contains measures 6-8 with chords G, G, C, and D7. The third staff contains measures 9-11 with chords G, D7, G, and D7.

# O Tannenbaum O Christmas Tree

Musical score for 'O Tannenbaum' in G major, 3/4 time. The score consists of three staves of music. The first staff contains the first five measures with chords G, D7, G, (Em), Am, and D7. The second staff contains measures 6-8 with chords G, G, C, and D7. The third staff contains measures 9-11 with chords G, D7, G, and D7.

# O Tannenbaum O Christmas Tree

G D7 G (Em) Am D7

G G C D7

G D7 G D7

C A D7 C

# O Tannenbaum O Christmas Tree

G D7 G (Em) Am D7

G G C D7

G D7 G D7

C Am D7 C

## Verschiedene Kombinationen (Hintergrund aus)

### Das Wandern

Worte: Wilhelm Müller 1818 (1794-1827)

Weise: Karl Zöllner 1844 (1800-1860)

$\text{♩} = 120$

1. Das Wan - dern ist des Mül - lers Lust, das Wan - dern ist des  
 Mül - lers Lust, das Wan - - dern. Das \_\_\_ muss ein schlech - ter \_\_\_  
 Mül - ler sein, dem \_\_\_ nie - mals fiel \_\_\_ das \_\_\_ Wan - dern ein, dem  
 nie - mals fiel das Wan - dern ein, das Wan - - - dern.

### O Tannenbaum O Christmas Tree

G D7 G (Em) Am D7  
 G G C D7  
 G D7 G D7  
 G Am D7 G

### TEST: Vocal SATB score.

A four-part vocal SATB score for a scale exercise. The parts are soprano, alto, tenor, and bass. Each part has two staves of music. The notes are written in a simple, stepwise fashion. Below each staff, the corresponding letter names are written in a matching case (uppercase for soprano and alto, lowercase for tenor and bass). The first staff of each part contains the notes C, D, E, F, G, A, B, c. The second staff contains the notes c, d, e, f, g, a, b, c'. The tenor part uses a bass clef and the notes C, D, E, F, G, A, B, C. The bass part uses a bass clef and the notes C,, D,, E,, F,, G,, A,, B,, C,.

### Hey Jude

Lennon/McCartney

A musical score for the song 'Hey Jude' by Lennon/McCartney. The score is written in 4/4 time with a key signature of one sharp (F#). It consists of five staves of music. The first staff begins with a repeat sign. The second and third staves contain melodic lines with some accidentals. The fourth staff includes first and second endings, marked with '1' and '2'. The fifth staff features triplet markings over groups of three notes.