


## A Liverpool hero

①  **Match** the new words with their correct meaning.

the Leeds & Liverpool canal

the sun shines

screams and laughter

to sit on the edge of sth

to bend down

the surface

to be pulled under

to drown

out of nowhere

to dive into the water



[Mick Blakey](#)

very suddenly

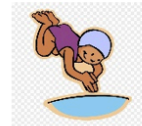
when somebody moves your body under water with them

top part of the water



[Clare Francis](#)

a channel of water made by humans




[MindQuest](#)

lean down to get to a lower position

sound of laughing



[gettyimages](#)

②  **Choose** the right answer.

1 The story takes place at...

- the ocean.
- a lake.
- a canal.

2 Little Willy fell into the water because he wanted to...


- disappear
- cool his face
- swim

3 Willy's friends...


- were too scared to help him.
- saved him.
- didn't see him fall into the water.

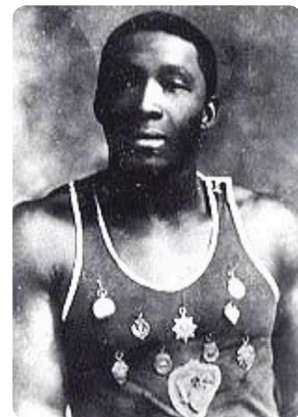
4 Willy was saved by...

- his mum.
- James Clarke.
- his friends.

- ③  **Explain** why James Clarke is a hero. Use this table to collect your ideas.

characteristics	examples

- ④  **Discuss** your findings with a partner.



James Clarke